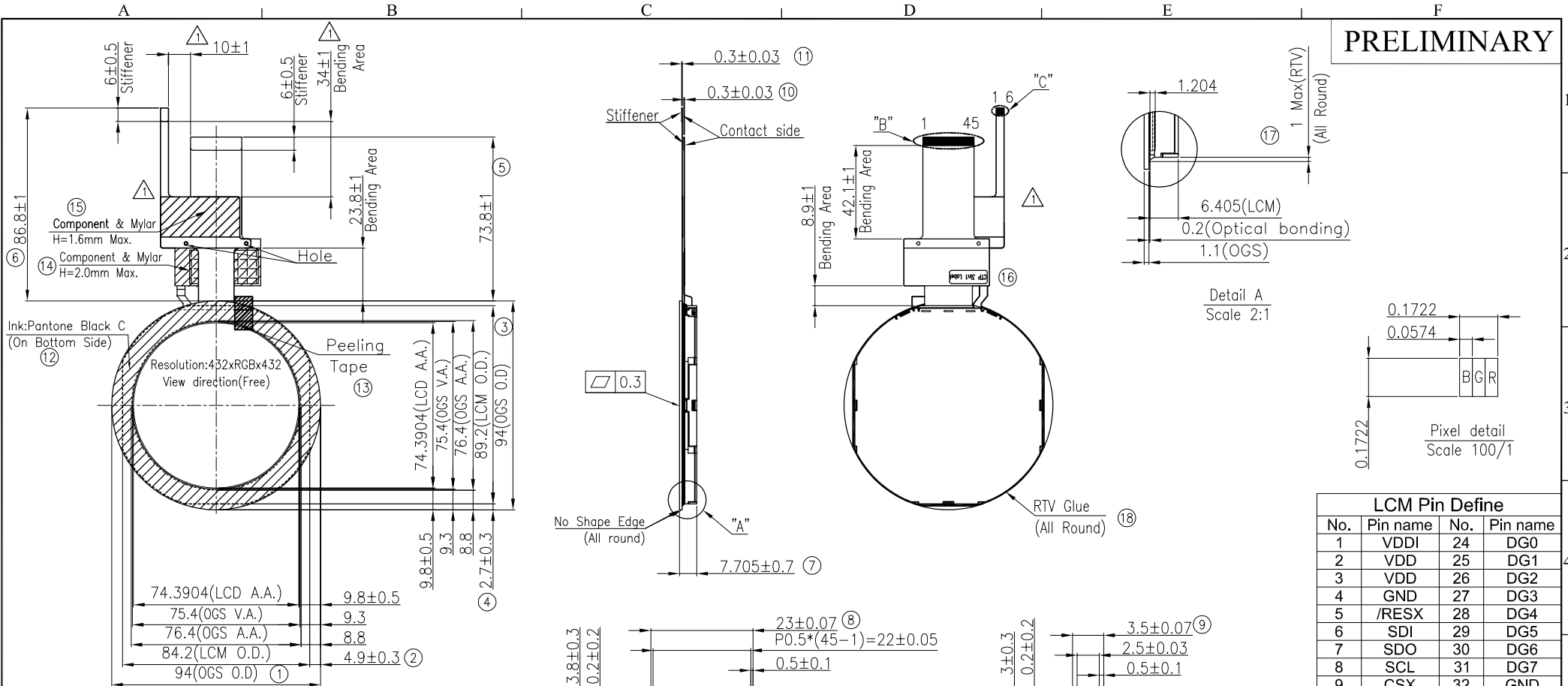


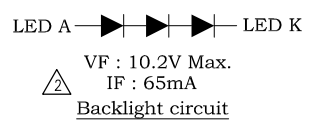
PRELIMINARY



- Note:
1. Tolerance is ±0.3 unless otherwise noted.
 2. LCM FPC matching connector: MOLEX 54132-4562 or equivalent.
 3. CTP FPC matching connector: MOLEX 51548-0671 or equivalent.
 4. For RoHS & REACH.
 5. Center brightness : 500 cd/m²(Typ.) 400cd/m²(Min.).
 6. Uniformity : 70%. (Min)
 7. Important Inspection. (1)~(18)
 8. CTP IC : Sitronix ST1633i.
 9. The bending radius of FPC should be larger than 1.0mm.

LCM Pin Define			
No.	Pin name	No.	Pin name
1	VDD1	24	DG0
2	VDD	25	DG1
3	VDD	26	DG2
4	GND	27	DG3
5	/RESX	28	DG4
6	SDI	29	DG5
7	SDO	30	DG6
8	SCL	31	DG7
9	CSX	32	GND
10	DCLK	33	DR0
11	DE	34	DR1
12	VSYN	35	DR2
13	HSYN	36	DR3
14	GND	37	DR4
15	DB0	38	DR5
16	DB1	39	DR6
17	DB2	40	DR7
18	DB3	41	GND
19	DB4	42	LEDA
20	DB5	43	LEDA
21	/TP_INT	44	LEDK
22	/TP_RST	45	LEDK
23	GND		

CPT PIN FUNCTION			
No.	Pin name	No.	Pin name
1	VCC	18	DB3
2	SCL	19	DB4
3	SDA	20	DB5
4	/TP_INT	21	DB6
5	/TP_RST	22	DB7
6	GND	23	GND



AUTH	DESCRIPTION	DATE	APPROVED	DATE:	DRAWN:	CHECK:	APPROVE:	DWG. NO.	TST030GN06-01C
								UNITS	M M
								SCALE	Scale
								REV.	3
								SHEET 1 OF 1	

